

VPN Before Login for Windows 10

This process is used for House Imaged Workstations Only

Step 1: Establishing an Internet Connection

For Wi-Fi Connections, click on network icon below and sign into your locations Wi-Fi. If this will be a common location, please select “Connect Automatically” so you can skip this process for this location in the future.

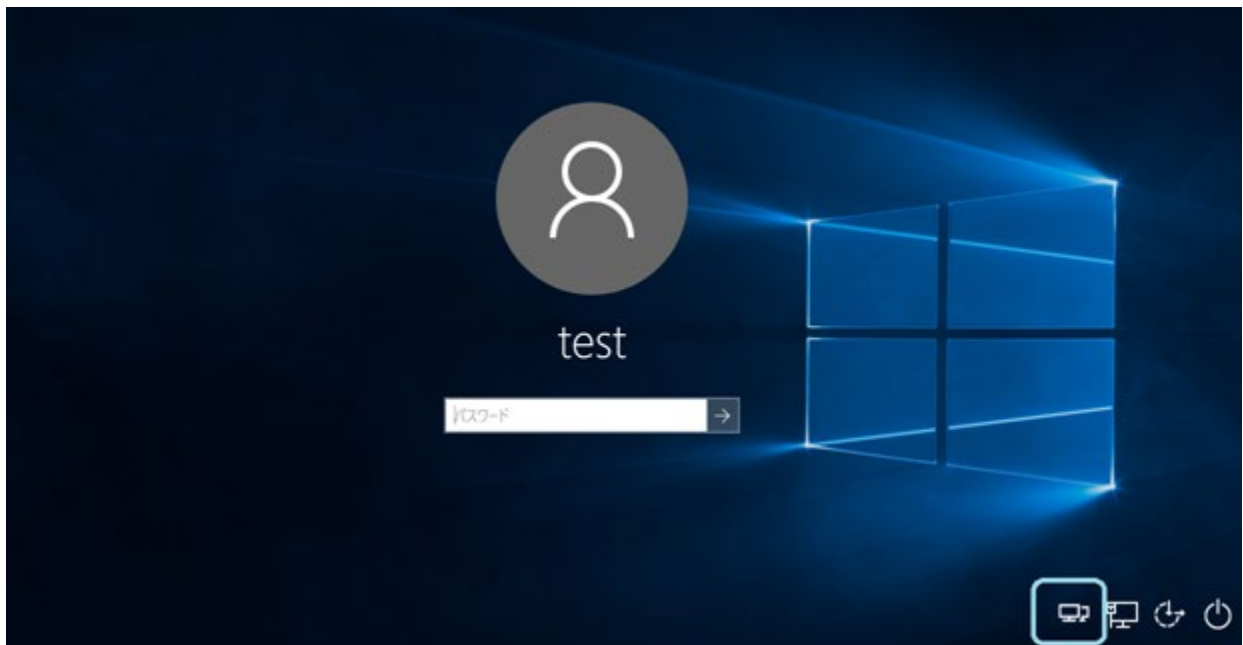
For Wired Connections, unless the icon has a Red X or Yellow Triangle, please skip to next step.

If there is a Red X or Yellow triangle, please verify ethernet cable is securely connected. Please contact your IT Vendor or Local Site Support team for further troubleshooting.



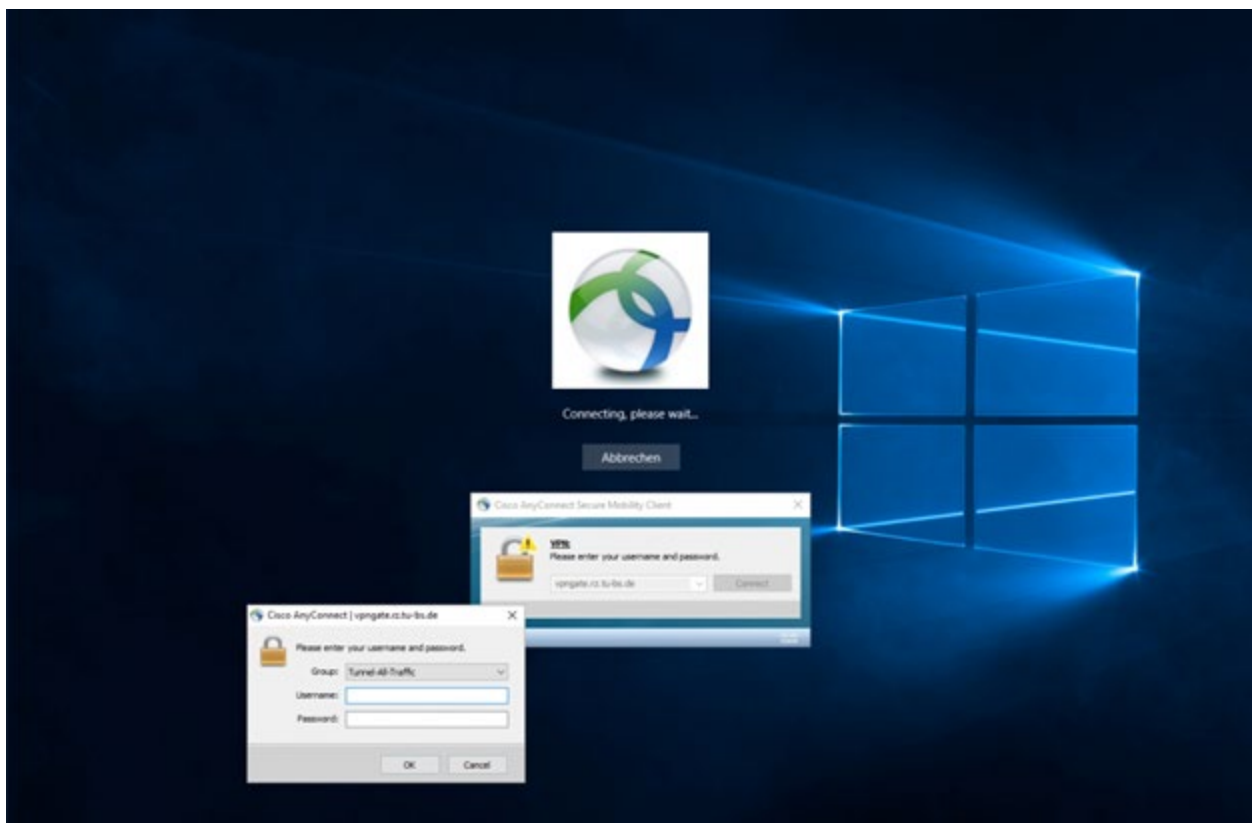
Step 2: Connection to House VPN

Click on the “Double” Network icon below which is the Cisco Any Connect App.



Step 3: Connection to House VPN

1. In the VPN app, type in (if not already there) `sodium.house.gov`, then select Connect.
2. On the next popup, type in your House User ID. (Ex J Smith for John Smith etc.)
3. Then type in your "Passcode".
 - a. This will be either the 8 Digit Code using the RSA SecurID App on your House Issued Mobile Device
 - b. Or your Hard Token's Pin + 6 Digit code
4. If code has been entered successfully, please click "Accept" to the House Disclaimer".



Step 4: Logging In.

Lastly, Click on “Other User” and enter your standard House User ID and Standard House “Password” (not passcode).

